

EAM Global Opportunities Composite Performance

	Q1	1 Year	3 Year	5 Year	ITD*
EAM Global Opportunities (Gross)	2.71%	-18.93%	14.83%	6.25%	10.32%
EAM Global Opportunities (Net)	2.52%	-19.53%	13.98%	5.46%	9.50%
MSCI ACWI Small Cap Index	4.24%	-9.57%	17.93%	4.19%	5.64%
MSCI ACWI Small Cap Growth Index	6.74%	-11.02%	15.37%	4.76%	6.68%
MSCI ACWI Small Cap Value Index	1.81%	-8.44%	19.92%	3.17%	4.20%

*Inception-To-Date returns are from the period beginning July 1, 2017. All returns as of March 31, 2023. Please see important disclosures at the end of this document. Source: EAM Investors, MSCI.

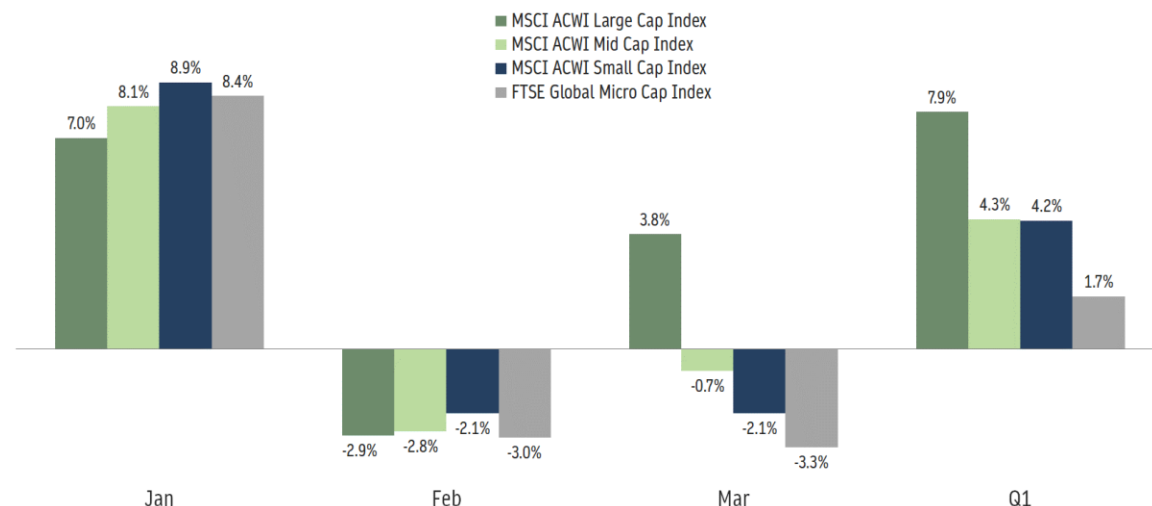
The EAM Global Opportunities strategy returned +2.52% (Net of fees) in Q1, underperforming the MSCI ACWI Small Cap Index by 173 basis points. All of the strategy's underperformance came during January's market rebound which was led by low momentum, high Beta stocks.

Market Environment

Smaller market cap stocks led a robust, counter-trend rally to start the year driven by the abatement of tax loss selling and the prospect of a slowing rate of inflation. Risk appetites peaked in January, as investors aggressively positioned for central banks to 'pivot' to slowing or pausing interest rate hikes. However, the rally would not last in February, as resilient economic data suggested that interest rate hikes had further to go to bring inflation under control. At the same time, escalated US-China tensions along with a strengthening US dollar weighed on emerging markets. As if the beginning of the year fireworks weren't enough, March came in like a lion with the sudden collapse of Silicon Valley Bank and subsequent issues for Credit Suisse in Europe. The ensuing turmoil in the financial sector and fears of a broader contagion squashed any good feelings as investors braced for a hard-landing economic scenario. Smaller market cap stocks sold off in linear fashion in March with the MSCI ACWI Small Cap Index lagging large cap by the widest margin in any one month since March 2020. Much of large cap's outperformance came from US mega cap stocks (>\$500B) which were up over 12% in March.

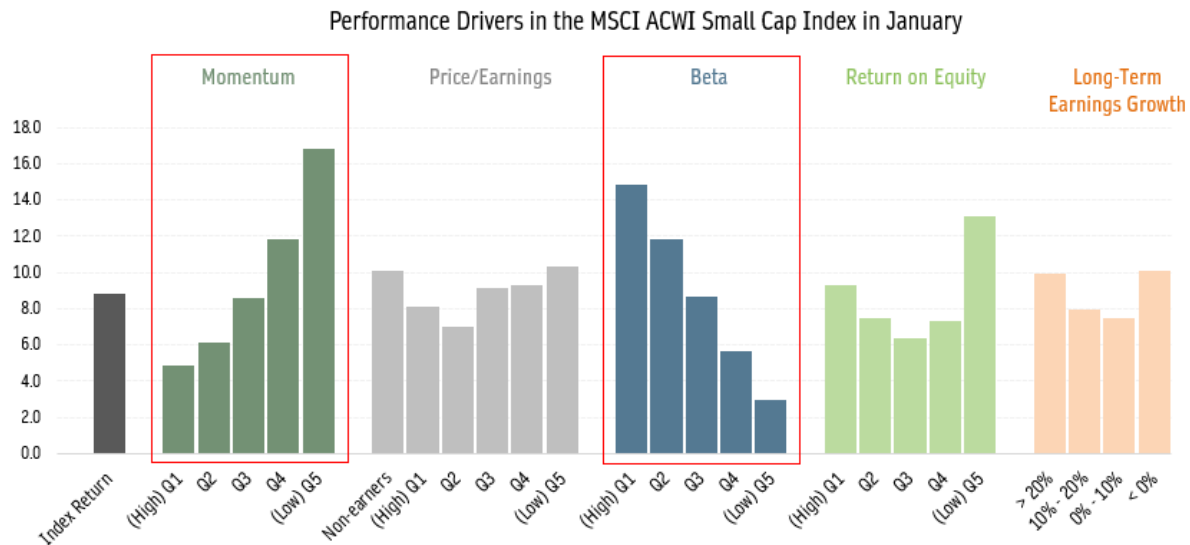
All said, large cap ended Q1 up 7.9%, 362 basis points ahead of small cap and 612 basis points ahead of micro cap.

A strong start to the year for small cap gave way to extreme underperformance in March



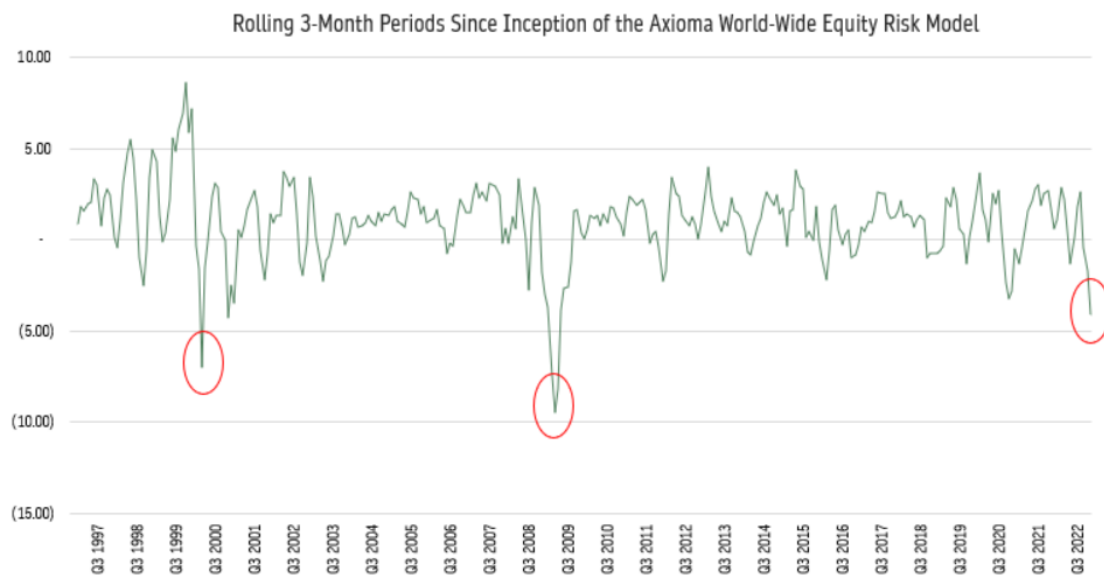
Stocks made broad-based gains in January. However, the magnitude of outperformance of the lowest momentum and highest Beta stocks was extreme. January's sharp reversal/counter-trend rally resulted in the lowest momentum stocks posting extraordinary gains, up 16.8% for the month - nearly twelve percentage points better than the highest momentum stocks. Additionally, higher Beta stocks outperformed in linear fashion, with the highest Beta quintile up 14.8%, while the lowest was up 3.0%. Further, outperformance of the lowest ROE (+13.1%), non-earners (+10.1%), and stocks with negative long-term earnings growth (+10.1%) underscores the risk-on sentiment in the period.

Low momentum stocks significantly outperformed in January's rebound



Through the lens of Axioma's World-Wide Equity Risk Model, January was the 7th worst 1-month return for momentum in model history going back to 1997. Whipsawing market action and quick trend reversals reflected extreme investor uncertainty that has led to a challenging environment for the momentum factor. For historical perspective, the trailing 3-months ending in January has been the third worst period in model history for the momentum factor - behind the financial crisis and tech bubble.

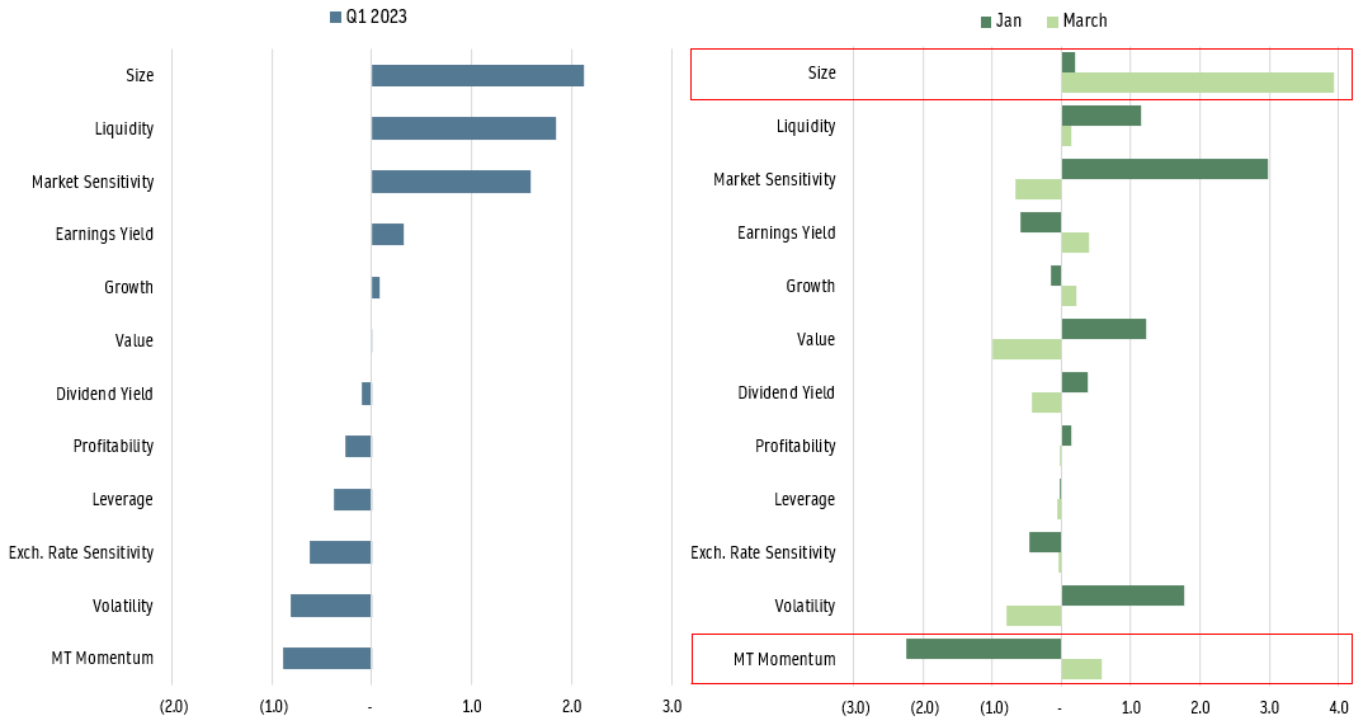
Historic 3-Month Decline for the Momentum Factor



Despite positive returns in February and March, the quarter ended with momentum as the worst performing factor in Q1, driven entirely by January's low momentum rally. Other extreme moves came in March for the size factor, given large cap's significant outperformance – particularly in the days following the collapse of Silicon Valley Bank. It's worth noting that March was the third best month on record for the size factor in the World-Wide Equity Risk Model since its inception in 1997. In addition to size, liquidity and market sensitivity also outperformed in Q1.

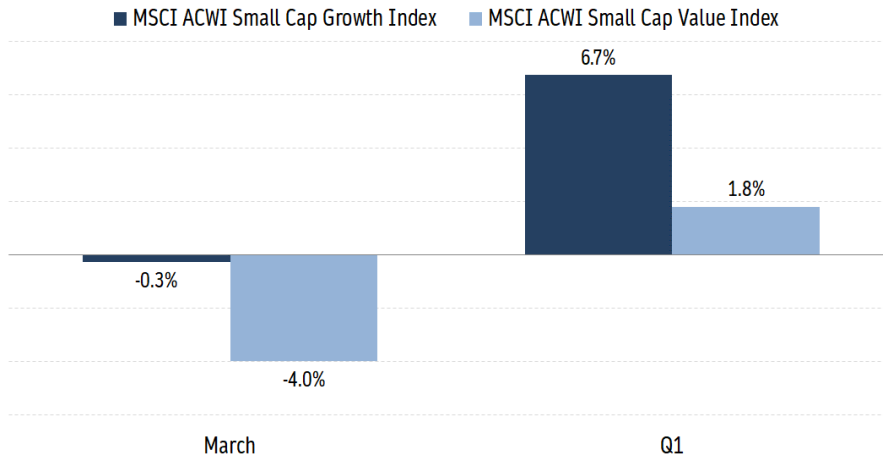
Outsized factor returns in January and March drove performance for the quarter

Axioma World-Wide Equity Risk Model Factor Returns



From a traditional style perspective, growth significantly outperformed value in Q1. Investors flocked to the hardest hit areas of the market from last year - most notably longer duration growth segments given a decline in global bond yields. Technology was the standout performer in the quarter, up 15.2% in the MSCI ACWI Small Cap Index. At the same time, the collapse of Silicon Valley Bank in March triggered a selloff in financials that weighed heavily on the value index. Financials was the worst performing sector in the global small cap index, down 11.3% in March and down 5.3% for the quarter.

Growth significantly outperformed in March and Q1



Regionally, Europe was the top performer in Q1, up 7.4% in the MSCI ACWI Small Cap Index, driven by double-digit gains in Italy, Germany, and Sweden. Taiwan and Korea were the two best performing countries in the index for the quarter boosted by optimism around global growth and China’s reopening. Still, emerging markets lagged developed with India and China being among the worst performers for the quarter.

MSCI ACWI Small Cap Index: Taiwan and Korea were among the top performers in the small cap index

	Q1 Return	Q1 Avg Weight	Q1 Contribution
Developed Markets	4.29	87.45	3.76
Italy	14.38	1.10	0.14
Germany	12.32	1.57	0.18
Sweden	10.45	1.87	0.18
France	9.68	1.25	0.11
Switzerland	9.40	1.52	0.14
Canada	5.61	3.51	0.22
United Kingdom	4.55	4.79	0.22
Japan	4.05	9.85	0.38
United States	3.78	52.00	1.99
Australia	-1.40	3.23	-0.02
Emerging Markets	3.87	12.55	0.49
Taiwan	15.47	2.61	0.36
Korea	14.55	1.80	0.25
China	-4.11	1.27	-0.04
India	-4.20	2.76	-0.12
Total	4.24	100.00	4.24

Countries with >1% weight in the index are shown.

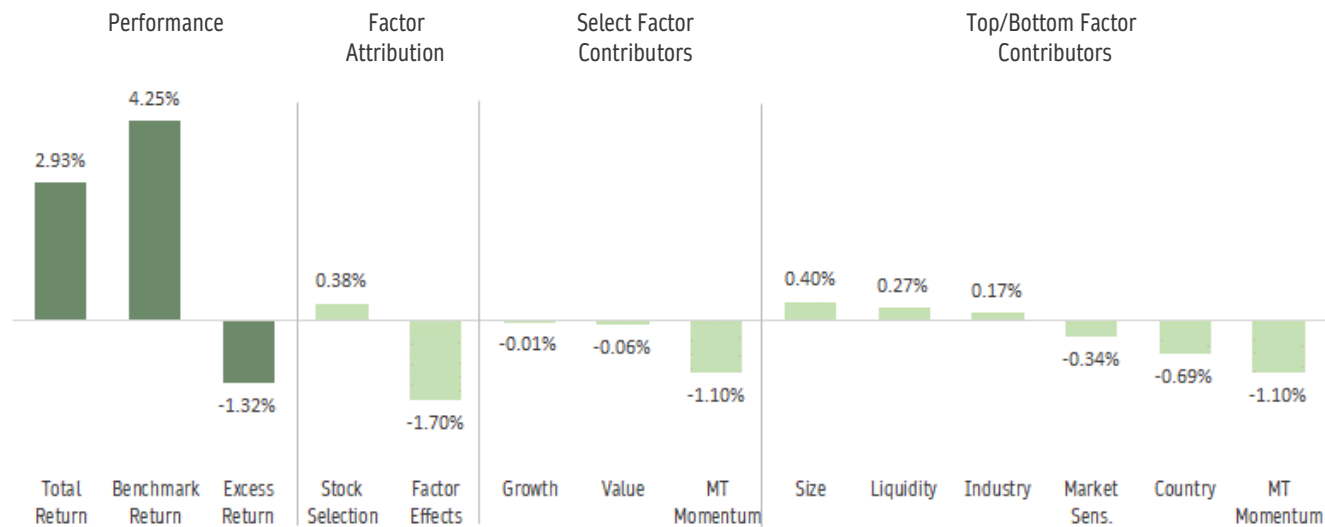
EAM Global Opportunities: 1st Quarter Performance & Risk Attribution

The EAM Global Opportunities strategy returned +2.52% (Net of fees) in Q1, underperforming the MSCI ACWI Small Cap Index by 173 basis points. All of the strategy's underperformance came during January's market rebound which was led by low momentum, high Beta stocks.

Risk-based attribution shows the strategy underperformed due to negative impacts from factor exposures, while stock selection was additive. The strategy's inherent exposure to medium-term momentum was the single largest driver of underperformance in Q1. Relative country positioning further detracted, as well as under-exposure to market sensitivity (Beta).

On the other side, the strategy benefitted from exposure to size and liquidity, as well as relative industry positioning. From a stock selection standpoint, holdings in the United States, China and Israel contributed most, offset partially by negative effects in the United Kingdom, India, and Finland.

Q1'23 Axioma Risk Attribution: EAM Global Opportunities vs. MSCI ACWI Small Cap Index



Calculated using end-of-day pricing, therefore may not exactly equal actual composite return.

Source: EAM Investors LLC; Axioma World-Wide Equity Fundamental Risk Model; MSCI; FactSet Research Systems Inc.

Performance attribution by sector shows that the strategy's underperformance was due to negative stock selection, while allocation effects were positive. Stock selection detracted most in consumer discretionary and health care; however, it was additive in financials, consumer staples, and communication services. From an allocation standpoint, the strategy's overweight to information technology and underweight to real estate was additive in the quarter.

Attribution by country shows negative allocation effects drove the strategy's underperformance in Q1, while stock selection was also mildly negative. From an allocation standpoint, the strategy's overweight to China and India were the largest detractors. On the other side, stock selection in the United States, China and Israel was positive, offset partially by holdings in the United Kingdom, India, and Finland.

Q1'23 Performance Attribution: EAM Global Opportunities vs. MSCI ACWI Small Cap Index

	EAM Global Opportunities			MSCI ACWI Small Cap Index			Active			Performance Attribution		
	Average Weight	Total Return	Contrib. To Return	Average Weight	Total Return	Contrib. To Return	Average Weight	Total Return	Contrib. To Return	Allocation Effect	Selection Effect	Total Effect
Sector Attribution: Top/Bottom												
Financials	12.86	-2.31	-0.48	14.07	-5.29	-0.77	-1.22	2.98	0.29	0.03	0.46	0.48
Real Estate	0.52	4.19	0.03	8.51	-0.68	-0.03	-7.99	4.87	0.06	0.37	0.09	0.46
Communication Services	2.79	15.69	0.45	3.12	5.98	0.18	-0.33	9.71	0.28	-0.01	0.28	0.26
Industrials	20.62	4.62	0.79	19.43	8.01	1.47	1.19	-3.39	-0.68	0.04	-0.59	-0.54
Consumer Discretionary	14.20	-0.36	-0.25	12.76	8.39	1.03	1.44	-8.75	-1.27	0.01	-1.16	-1.16
Health Care	13.55	-6.08	-0.73	10.18	0.38	0.08	3.36	-6.46	-0.81	-0.19	-1.11	-1.30
Total	100.00	2.93	2.93	100.00	4.25	4.25	--	-1.32	-1.32	0.12	-1.44	-1.32

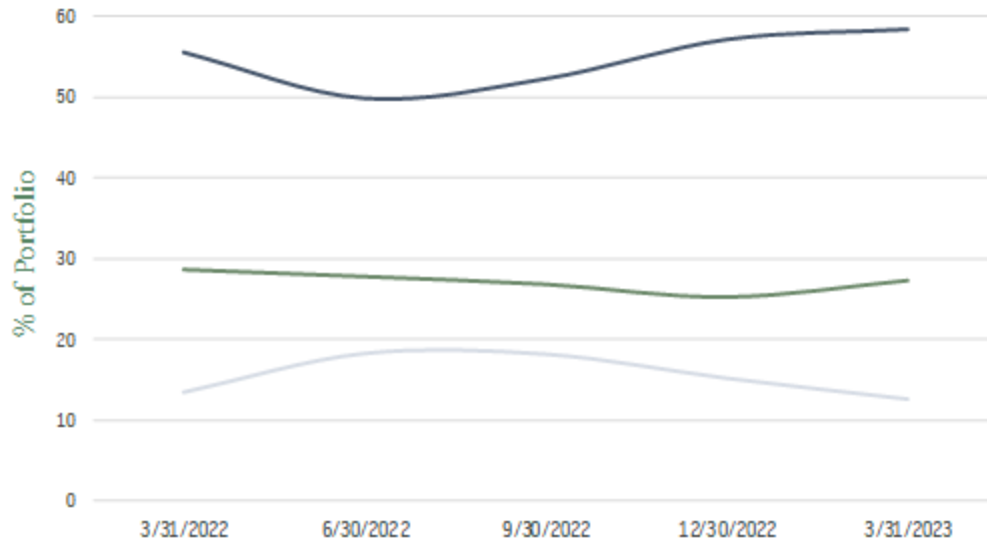
Country Attribution: Top/Bottom												
United States	58.67	4.40	2.53	52.00	3.78	1.99	6.67	0.62	0.54	-0.11	0.47	0.35
Israel	0.80	17.72	0.15	0.84	-8.41	-0.07	-0.04	26.12	0.21	0.02	0.20	0.22
Korea	1.68	28.25	0.41	1.80	14.55	0.25	-0.13	13.71	0.16	-0.01	0.19	0.18
Finland	0.34	-13.51	-0.09	0.50	8.26	0.04	-0.16	-21.77	-0.13	-0.00	-0.17	-0.17
United Kingdom	2.23	-3.55	-0.13	4.79	4.55	0.22	-2.56	-8.10	-0.35	-0.01	-0.34	-0.35
India	3.87	-8.98	-0.46	2.76	-4.20	-0.12	1.11	-4.78	-0.33	-0.31	-0.29	-0.60
Total	100.00	2.93	2.93	100.00	4.25	4.25	--	-1.32	-1.32	-1.20	-0.12	-1.32

Top/Bottom Stock Contributors							Sector	Country
Axcelis Technologies, Inc.	1.05	67.91	0.49	0.05	67.91	0.02	Information Technology	United States
Global Unichip Corp.	0.89	70.87	0.44	0.03	70.87	0.02	Information Technology	Taiwan
e.l.f. Beauty, Inc.	0.96	48.92	0.41	0.04	48.92	0.02	Consumer Staples	United States
Weimob, Inc.	0.36	-33.70	-0.25	0.02	-27.45	-0.01	Information Technology	China
Wayfair, Inc. Class A	0.21	-39.87	-0.32	0.04	4.41	0.00	Consumer Discretionary	United States
Peloton Interactive, Inc. Class A	0.32	-42.67	-0.34	0.04	42.82	0.01	Consumer Discretionary	United States
Total	100.00	2.93	2.93	100.00	4.25	4.25		

Calculated using end-of-day pricing, therefore may not exactly equal actual composite return.

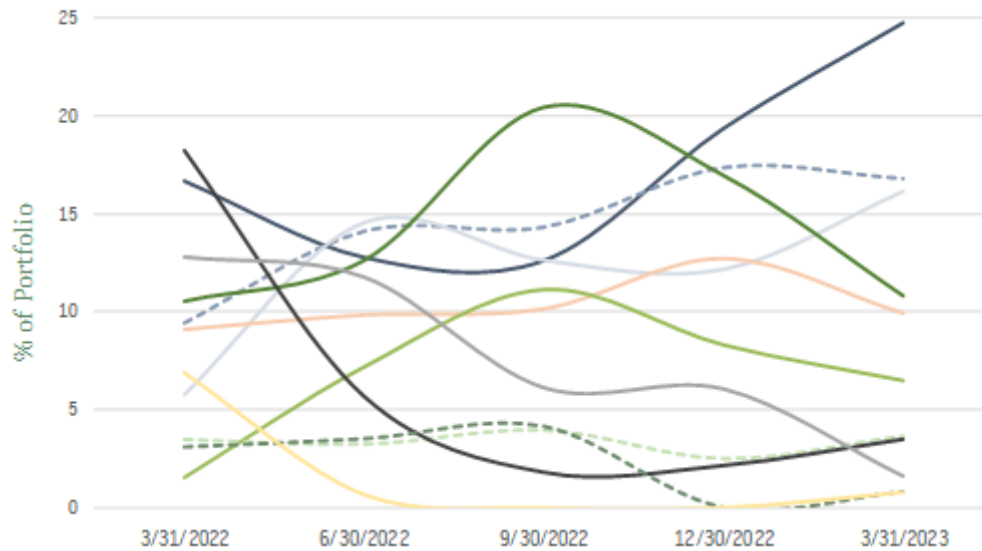
Source: EAM Investors LLC; S&P (GICS); MSCI; FactSet Research Systems Inc.

Portfolio Country Weights



Weights as of 3/31/2023	EAM Global Opportunities	MSCI ACWI Small Cap Index
United States	58.35	51.09
Developed	27.27	36.22
Japan	8.54	10.17
Germany	2.97	1.61
Canada	2.27	3.61
Denmark	1.71	0.70
Sweden	1.67	1.95
Other Developed	10.11	18.18
Emerging	12.61	12.69
China	4.63	1.16
India	2.97	2.79
Korea	1.93	1.99
Other Emerging	3.08	6.75

Portfolio Sector Weights



Weights as of 3/31/2023	EAM Global Opportunities	MSCI ACWI Small Cap Index
Industrials	24.76	19.34
Information Technology	16.77	11.92
Consumer Discretionary	16.14	12.99
Health Care	10.80	10.03
Financials	9.94	13.23
Consumer Staples	6.48	5.04
Communication Services	3.67	3.20
Materials	3.52	8.62
Energy	1.60	4.34
Utilities	0.80	3.05
Real Estate	0.78	8.25

Risk Statistics

	EAM Global Opportunities	MSCI ACWI Small Cap Index
Annualized Return (Gross)	10.32%	5.64%
Annualized Return (Net)	9.50%	5.64%
Alpha	4.98%	-
Tracking Error	8.85%	-
Standard Deviation	20.9%	19.8%
Information Ratio	0.53	-
Sharpe Ratio	0.43	0.22
Beta	0.96	1.00
R-Squared	0.82	1.00
Up Market Capture	107.3%	-
Down Market Capture	90.9%	-

Risk statistics are calculated for the period since inception July 1, 2017 – March 31, 2023, annualized gross of fees. Please see the “Important Disclosures” page for detailed performance disclosures. Source: EAM Investors, MSCI

Characteristics

	EAM Global Opportunities	MSCI ACWI Small Cap Index
# of Portfolio Holdings	124	6,256
% of Portfolio in the Top 10	12.8%	1.5%
Market Capitalization, Weighted Average, \$M	6,155	3,599
Active Share	97%	-
% of Stocks with Positive Earnings Surprise	75%	42%
% of Stocks with Upward Earnings Revisions	52%	32%
Exposure to Medium-Term Momentum (Axioma)	1.36	0.07
Earnings Growth, FY2	14.9%	13.1%
Price/Earnings, FY2	15.1x	11.7x
Enterprise Value/Sales, FY2	1.42x	1.61x

Medium-Term Momentum exposure represents z-scores calculated using the Axioma World-Wide Fundamental Equity Risk Model. EAM Investors, FactSet, Axioma, MSCI

	Q1	1 Year	3 Year	5 Year	7 Year	10 Year	ITD*
EAM Non-US Small Cap (Gross)	3.49%	-13.82%	13.90%	1.82%	7.21%	8.11%	8.32%
EAM Non-US Small Cap (Net)	3.29%	-14.50%	13.00%	1.01%	6.36%	7.25%	7.46%
MSCI ACWI ex-US Small Cap Index	4.70%	-10.37%	15.04%	1.67%	5.66%	5.06%	3.91%
MSCI ACWI ex-US Small Cap Growth Index	5.62%	-12.90%	13.30%	1.69%	5.60%	5.30%	4.04%
MSCI ACWI ex-US Small Cap Value Index	3.80%	-7.96%	16.43%	1.39%	5.53%	4.68%	3.65%

	Q1	1 Year	3 Year	5 Year	7 Year	10 Year	ITD*
EAM Emerging Markets Small Cap (Gross)	4.03%	-17.83%	16.67%	1.18%	5.65%	4.44%	7.34%
EAM Emerging Markets Small Cap (Net)	3.81%	-18.52%	15.69%	0.33%	4.76%	3.55%	6.44%
MSCI Emerging Markets Small Cap Index	3.87%	-10.99%	20.68%	1.80%	5.80%	3.18%	3.71%
MSCI EM Small Cap Growth Index	6.09%	-12.54%	20.22%	1.77%	4.93%	2.65%	3.43%
MSCI EM Small Cap Value Index	1.67%	-9.51%	20.94%	1.68%	6.55%	3.61%	3.91%

	Q1	1 Year	3 Year	5 Year	7 Year	ITD*
EAM Non-US Micro Cap (Gross)	4.94%	-15.98%	19.23%	-0.02%	6.04%	6.45%
EAM Non-US Micro Cap (Net)	4.69%	-16.81%	18.05%	-1.01%	4.99%	5.39%
Global Linked ex-US Micro Cap Index ¹	3.41%	-15.72%	20.01%	2.59%	6.59%	4.12%

	Q1	1 Year	3 Year	5 Year	ITD*
EAM Global Opportunities (Gross)	2.71%	-18.93%	14.83%	6.25%	10.32%
EAM Global Opportunities (Net)	2.52%	-19.53%	13.98%	5.46%	9.50%
MSCI ACWI Small Cap Index	4.24%	-9.57%	17.93%	4.19%	5.64%
MSCI ACWI Small Cap Growth Index	6.74%	-11.02%	15.37%	4.76%	6.68%
MSCI ACWI Small Cap Value Index	1.81%	-8.44%	19.92%	3.17%	4.20%

All periods greater than one year are annualized. Please see the "Important Disclosures" page for detailed performance disclosures.

*EAM Non-US Small Cap inception date of May 1, 2011, *EAM Emerging Markets Small Cap inception date of April 1, 2012,

*EAM Non-US Micro Cap inception date of June 1, 2014. *EAM Global Opportunities inception date of July 1, 2017.

¹Comprised of the Russell Global ex-US Micro Cap Index from inception thru 12/31/2018, thereafter returns are for the FTSE Global ex-US Micro Cap Index

	Q1	1 Year	3 Year	5 Year	7 Year	10 Year	ITD*
EAM US Small Cap (Gross)	1.63%	-19.67%	13.34%	7.06%	11.24%	9.79%	8.67%
EAM US Small Cap (Net)	1.45%	-20.27%	12.49%	6.26%	10.41%	8.97%	7.86%
Russell 2000 Growth Index	6.07%	-10.60%	13.36%	4.26%	8.74%	8.49%	7.12%
Russell 2000 Index	2.74%	-11.61%	17.51%	4.71%	8.55%	8.04%	6.62%
Russell 2000 Value Index	-0.66%	-12.96%	21.01%	4.55%	7.86%	7.22%	5.85%

	Q1	1 Year	3 Year	5 Year	7 Year	10 Year	ITD*
EAM US Micro Cap (Gross)	-0.25%	-16.70%	18.58%	7.84%	12.46%	10.14%	9.15%
EAM US Micro Cap (Net)	-0.44%	-17.36%	17.64%	6.99%	11.57%	9.27%	8.28%
Russell Microcap Growth Index	0.76%	-17.98%	10.87%	0.95%	5.42%	5.82%	4.45%
Russell Microcap Index	-2.83%	-17.93%	17.19%	2.96%	7.68%	7.27%	5.26%
Russell Microcap Value Index	-5.17%	-18.18%	21.02%	3.79%	8.84%	7.96%	5.51%

	Q1	1 Year	3 Year	5 Year	7 Year	10 Year	ITD*
EAM US Ultra Micro Cap (Gross)	0.21%	-9.54%	32.12%	14.59%	17.04%	13.01%	11.21%
EAM US Ultra Micro Cap (Net)	0.01%	-10.26%	31.07%	13.68%	16.11%	12.12%	10.33%
Russell Microcap Growth Index	0.76%	-17.98%	10.87%	0.95%	5.42%	5.82%	4.45%
Russell Microcap Index	-2.83%	-17.93%	17.19%	2.96%	7.68%	7.27%	5.26%
Russell Microcap Value Index	-5.17%	-18.18%	21.02%	3.79%	8.84%	7.96%	5.51%

All periods greater than one year are annualized. Please see the "Important Disclosures" page for detailed performance disclosures.

*Inception-To-Date returns are from the period beginning October 2, 2007.

Important Disclosures:

Past performance does not ensure future results, and there is no assurance that the portfolios will achieve their investment objectives.

Gross and net composite returns are presented net of brokerage commissions and include income from interest and dividends as well as capital gains less applicable withholdings. The returns do not reflect the deduction of other taxes a typical investor may accrue or custodial fees. The U.S Dollar is the currency used to express performance. All periods greater than one year are annualized.

EAM Small Cap

The inception date for the EAM Small Cap composite is October 2, 2007. Net returns are net of the maximum annual management fee of 0.75%. The Russell 2000 Index consists of the smallest 2,000 securities in the Russell 3000 Index, representing approximately 10% of the Russell 3000 total market capitalization. The Russell 2000 Value Index (R2KVI) measures the performance of those Russell 2000 companies with relatively lower price-to-book ratios and lower forecasted growth values. The Russell 2000 Index and the Russell 2000 Value Index are being presented for informational purposes only. The Russell 2000 Growth Index (R2KGI) measures the performance of those Russell 2000 companies with higher price-to-book ratios and higher forecasted growth values. The Russell 2000 Growth Index has been chosen as a benchmark to the EAM Small Cap composite because the Advisor believes that it is the most appropriate broad-based securities index to be used for comparative purposes given the investment growth-oriented strategy of the portfolio.

EAM Micro Cap

The inception date for the EAM Micro Cap composite is October 2, 2007. Net returns are net of the maximum annual management fee of 0.80%. The Russell Microcap Index consists of the smallest 1,000 companies in the small-cap Russell 2000 Index plus the next 1,000 securities. The Russell Microcap Value Index measures the performance of those Russell Microcap companies with lower price-to-book ratios and lower forecasted growth values. The Russell Microcap Index and the Russell Microcap Value Index are being presented for informational purposes only. The Russell Microcap Growth Index (RMGI) measures the performance of those Russell Microcap companies with higher price-to-book ratios and higher forecasted growth values. The Russell Microcap Growth Index has been chosen as a benchmark to the EAM Micro Cap composite because the Advisor believes that it is the most appropriate broad-based securities index to be used for comparative purposes given the investment growth-oriented strategy of the portfolio.

EAM Ultra Micro Cap

The inception date for the EAM Ultra Micro Cap composite is October 2, 2007. Net returns are net of the maximum annual management fee of 0.80%. The Russell Microcap Index consists of the smallest 1,000 companies in the small-cap Russell 2000 Index plus the next 1,000 securities. The Russell Microcap Value Index measures the performance of those Russell Microcap companies with lower price-to-book ratios and lower forecasted growth values. The Russell Microcap Index and the Russell Microcap Value Index are being presented for informational purposes only. The Russell Microcap Growth Index (RMGI) measures the performance of those Russell Microcap companies with higher price-to-book ratios and higher forecasted growth values. The Russell Microcap Growth Index has been chosen as a benchmark to the EAM Micro Cap composite because the Advisor believes that it is the most appropriate broad-based securities index to be used for comparative purposes given the investment growth-oriented strategy of the portfolio.

EAM Non-US Small Cap

The inception date for the EAM Non-US Small Cap composite is May 1, 2011. Net returns are net of the maximum annual management fee of 0.80%. The MSCI ACWI ex-US Small Cap Index captures small cap representation across 22 of 23 Developed Markets (DM) countries (excluding the US) and 25 Emerging Markets (EM) countries. The index is designed to measure small cap equity market performance in the global developed and emerging markets excluding the United States. The MSCI ACWI ex-US Small Cap Index has been chosen as a benchmark to the EAM Non-US Small Cap strategy because the Advisor believes that it is the most appropriate broad-based securities index available to be used for comparative purposes given the investment strategy of the portfolios. The MSCI ACWI ex-US Small Cap Growth Index captures small cap securities exhibiting overall growth style characteristics across 22 of 23 DM countries (excluding the US) and 25 EM countries. The MSCI ACWI Small Cap Value Index captures small cap securities exhibiting overall value style characteristics across 23 DM countries and 25 EM countries. The MSCI ACWI ex-US Small Cap Growth Index and the MSCI ACWI ex-US Small Cap Value Index are being presented for informational purposes only.

EAM Emerging Markets Small Cap

The inception date for the EAM Emerging Markets Small Cap composite is April 1, 2012. Net returns are net of the maximum annual management fee of 0.85%. The MSCI Emerging Markets Small Cap Index includes small cap representation across 25 Emerging Markets countries (EM) and is designed to measure small cap equity market performance in the global emerging markets. The MSCI Emerging Markets Small Cap Index has been chosen as a benchmark to the EAM Emerging Markets Small Cap strategy because the Advisor believes that it is the most appropriate broad-based securities index available to be used for comparative purposes given the investment strategy of the portfolios. The MSCI Emerging Markets Small Cap Growth Index captures small cap securities exhibiting overall growth style characteristics across 25 EM countries. The MSCI Emerging Markets Value Index captures small cap securities exhibiting value style characteristics across 25 EM countries. The MSCI Emerging Markets Small Cap Growth Index and the MSCI Emerging Markets Small Cap Value Index are being presented for informational purposes only.

EAM Non-US Micro Cap

The inception date for the EAM Non-US Micro Cap composite is June 1, 2014. Net returns are net of the maximum annual management fee of 1.00%. The Linked Global ex-US Micro Cap Index represents the linked index returns of the Russell Global ex-US Micro Cap Index from June 1, 2014 through December 31, 2018 and the index returns of the FTSE Global ex-US Micro Cap Index effective January 1, 2019 and thereafter. The Russell Global ex-US Micro Cap Index was no longer supported effective December 31, 2018 and the FTSE Global ex-US Micro Cap Index is initiated effective January 1, 2019. The Adviser has linked the returns of these two indexes for comparison purposes because it believes that the linked return stream is the most appropriate broad-based securities indexing available to be used for comparative purposes given the investment strategy of the EAM Non-US Micro Cap Composite. The FTSE Global ex-US Micro Cap Index is a market-capitalization weighted index representing the performance of Micro cap stocks in Developed and Emerging markets (excluding the US). The FTSE Global ex-US Micro Cap index is constructed to represent the Micro-cap segment of the global equity market, excluding companies assigned to the United States.

EAM Global Opportunities

The inception date for the EAM Global Opportunities composite is July 1, 2017. Net returns are net of the maximum annual management fee of 0.75% for the EAM Global Opportunities Strategy. The MSCI ACWI Small Cap Index captures small cap representation across 23 Developed Markets (DM) countries and 25 Emerging Markets (EM) countries. The index is designed to measure small cap equity market performance in the global developed and emerging markets. The MSCI ACWI Small Cap Index has been chosen as a benchmark to the EAM Global Opportunities strategy because the Advisor believes that it is the most appropriate broad-based securities index available to be used for comparative purposes given the investment strategy of the portfolios. The MSCI ACWI Small Cap Growth Index captures small-cap securities exhibiting overall growth style characteristics across 23 DM countries and 25 EM countries. The MSCI ACWI Small Cap Value Index captures small cap securities exhibiting overall value style characteristics across 23 DM countries and 25 EM countries. The MSCI ACWI Small Cap Value Index and the MSCI ACWI Small Cap Growth Index are being presented for informational purposes only.

The performance of the Indexes reflects dividends net of foreign tax withholdings applicable to a typical foreign investor and capital gains but does not reflect the deduction of any investment management fees or other expenses or taxes. The indexes are unmanaged and cannot be invested in directly.

Under no circumstances does the information contained within represent a recommendation to buy or sell securities. The securities identified in the materials are used for illustrative purposes in the discussion of our investment philosophy and processes. We may or may not have held, currently hold, or will hold any of the securities.

The portfolio(s) are actively managed and holdings are subject to change. We believe the information presented is reliable, but we do not guarantee its accuracy. The opinions expressed will evolve as future events unfold. The investment risk of the portfolio(s) may be increased by the portfolios' ability to invest in smaller company stocks, and IPOs. Investing in growth stocks involves certain risks, in part, because the value of securities is based upon future expectations that may or may not be met. Small company stocks are generally riskier than large company stocks due to greater volatility and less liquidity.

Neither MSCI nor any other party involved in or related to compiling, computing or creating the MSCI data makes any express or implied warranties or representations with respect to such data (or the results to be obtained by the use thereof), and all such parties hereby expressly disclaim all warranties of originality, accuracy, completeness, merchantability or fitness for a particular purpose with respect to any of such data. Without limiting any of the foregoing, in no event shall MSCI, any of its affiliates or any third party involved in or related to compiling, computing or creating the data have any liability for any direct, indirect, special, punitive, consequential or any other damages (including lost profits) even if notified of the possibility of such damages. No further distribution or dissemination of the MSCI data is permitted without MSCI's express written consent.

FTSE Russell is the source of the Russell Index data and the owner of all trademarks and copyrights related thereto. Any further redistribution is prohibited. FTSE Russell is not responsible for the accuracy of this presentation and reserves the right at any time and without notice to change, amend or cease publication of the information.